



www.ThrottleDownKustoms.com

1987-1995 Jeep YJ Heavy Duty Steering Box Bracket

Designed to fit 1987-1995 YJ Wrangler's. This Steering Box Bracket will move the steering gear 1" forward and is offset so your tie rod and drag link are not on top of each other.

Included with our YJ Steering Box Bracket:

- 1- Steering Box Bracket
- 1- 3/8" Offset Plate
- 1- 1/4" Plate Spacer
- 1- 1/4" Round Spacer
- 2- 1 1/2" Spacers
- 1- 3/4" Spacer
- 2- 7/16" x 4" Bolts
- 1- 7/16" x 1 3/4" Bolt
- 1- 7/16" x 1 1/2" Bolt
- 6- 7/16" Flat Washers
- 2- 7/16" Lock Nuts
- 1- 3/8" x 1" Bolt
- 1- 3/8" Lock Nut
- 2- 3/8" Flat Washers



Step 1: Disconnect power steering hoses, drag link, and steering linkage. Remove factory steering box bracket from frame and keep factory bolts for later use.

Step 2: Install TDK Steering Box Bracket with factory bolts through bottom of bracket and 7/16" x 4" bolts with washers through top holes.

Step 3: Install 1/4" thick spacer as shown. (Figure 1 and Figure 1 (1))

Step 4: Install 1/4" and 3/4" round spacers over threaded holes as shown. (Figure 2)

Step 5: Loosely install 3/8" thick offset plate as shown over spacers. Use 7/16" x 3 3/4" bolt with washer through the 3/4" spacer and the 7/16" x 1 1/2" bolt with washer through 1/4" spacer. (Figure 3 and Figure 3 (1))

Step 6: Install steering box over the bolts sticking through the frame and steering box bracket. Install 7/16" washers and thread 7/16" lock nuts onto bolts. (Figure 4 and Figure 4 (1))

Step 7: Insert 1 1/2" spacers between the steering box and steering box bracket on the lower two holes and install factory bolts. (Figure 5, Figure 5 (1), and Figure 5 (2)) At this point you can tighten all hardware.

Step 8: Install the sway bar clamp onto the lower side of the steering box bracket using the factory bolt in the threaded hole and the 3/8" bolt, washers, and nut provided.

Step 9: Reinstall drag link, hoses, and steering linkage. It may be necessary to notch the bottom of the grille panel to accommodate the power steering hoses.

**** We recommend the use of Red Loctite on new and reused bolts and nuts. Start your vehicle and turn the wheels to lock several times to check for any signs of binding. All the bolts should be retightened after the first few hours of use and periodically thereafter.****



Figure 1



Figure 1 (1)



Figure 2



Figure 3



Figure 3 (1)



Figure 4

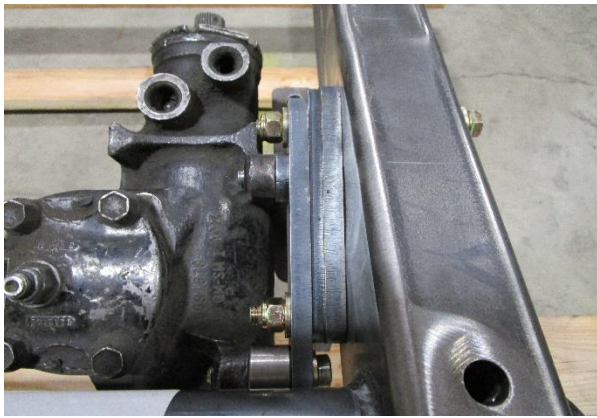


Figure 4 (1)



Figure 5



Figure 5 (1)



Figure 5 (2)